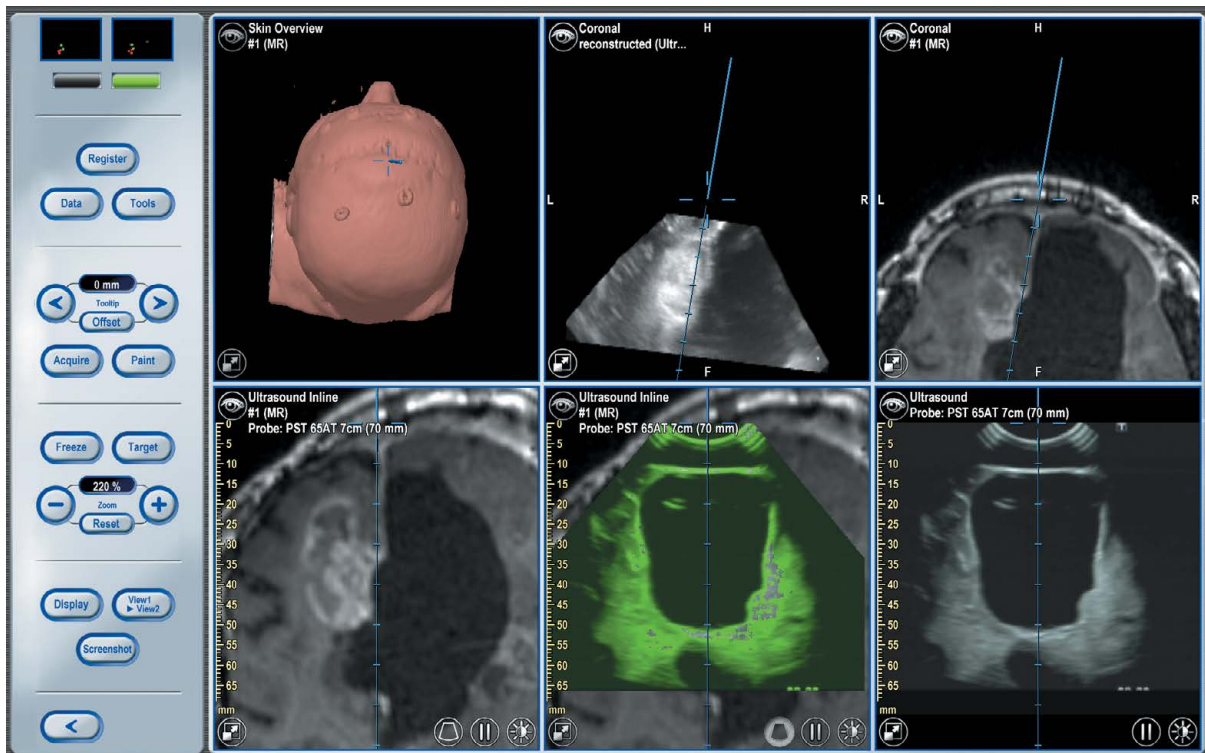


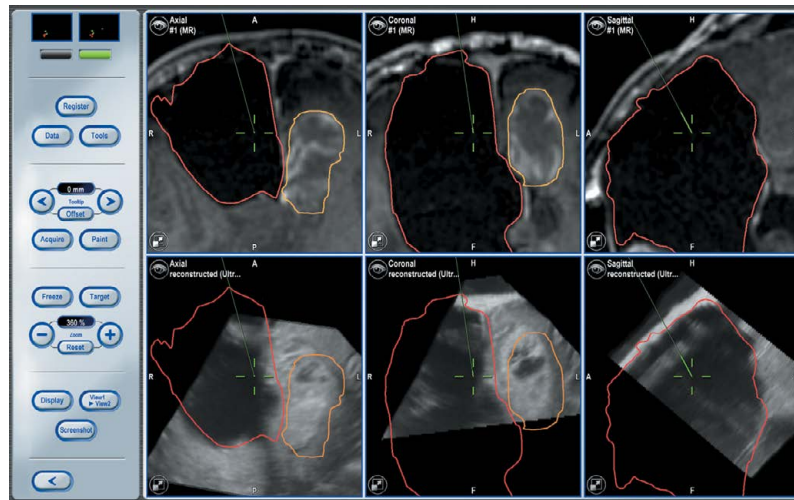
# LIVE IMAGING

Real-time updates. Easy image interpretation. The Brainlab® Ultrasound Integration fuses intra-operative ultrasound information with navigated patient data.



Brainlab® Cranial Navigation Software with ultrasound overlay

Brainlab® neuronavigation features live anatomical updates that are overlaid directly onto pre-operative data, offering clinicians advanced resection control and brain shift compensation. Neuronavigation provides ultrasound probe orientation for easy image interpretation. Surgeons are also aided by composite views of intra-operative ultrasound and reformatted CT and MR images.



3D Ultrasound data set co-registered to pre-operative MRI



Aloka



BK Medical



Zonare

## TRUE COMPATIBILITY

The Brainlab® open-platform technology offers facilities more ultrasound choices—the navigation system can integrate with more than 35 ultrasound probes from over 14 different vendors.

## 3D ULTRASOUND

The Brainlab® Ultrasound Integration upgrades any compatible 2D ultrasound system with 3D functionality. Based on an intra-operatively acquired series of ultrasound images a volumetric data set is generated that allows for navigation in axial, coronal, sagittal and other reconstruction views.

