

# INTUITIVE NAVIGATION AND PLANNING

Compact and simple to use—with a separate camera for maximum OR flexibility—the Kolibri™ navigation system adapts to your workflow while meeting the demands of the busy, modern OR.

## SETUP IN A FLASH

After scanning the patient, transfer CT data to the Kolibri™ via USB flash drive, CD-ROM or over the network. With the patient in position and wearing the reference array, registration can begin. Brainlab offers touchless and touch-based registration techniques with z-touch® and Softouch®.

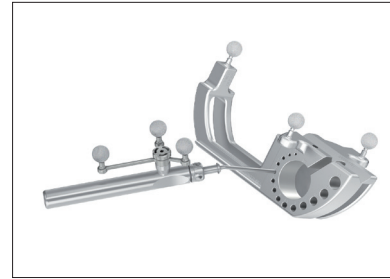
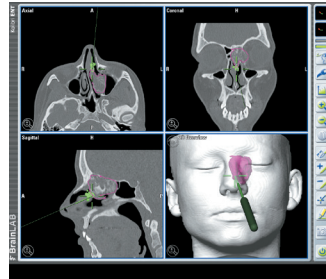
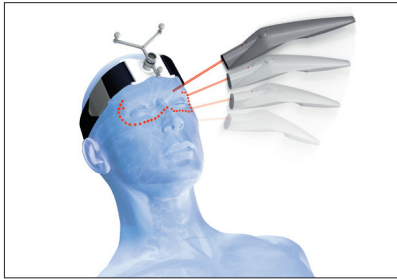
## PRECISE NAVIGATION

Kolibri offers step-by-step guidance. The integrated touchscreen provides continuous information on instrument position and movement across multiple planes (sagittal, axial, coronal). A real-time endoscopic view can be integrated into the navigation screen—no software upgrade needed.

## KOLIBRI FEATURES

- › Workflow flexibility through separate camera and touchscreen
- › Live endoscopic image integration for sinus surgery
- › Quick and easy transfer of existing CT datasets within the OR
- › Optional pre-operative planning for maximum flexibility





### CUSTOMIZE ESSENTIALS

Choose the functionalities needed for everyday procedures with module-based Brainlab software. New modules are easily added to meet your needs.

### EFFORTLESS REGISTRATION

z-touch® and Softouch® offer quick, easy registration without masks, headsets or markers. Projecting virtual points onto the surface anatomy, z-touch delivers precise registration in seconds. For concealed surface landmarks, Softouch provides quick and reliable touch-based registration, a perfect complement to z-touch.

### LESS IS MORE

Eraser – Live Anatomy Update virtually updates existing CT datasets to reflect intra-operative changes to the patient anatomy. With Eraser, no extra diagnostic imaging is needed. Simply take out the old data and re-navigate.

### YOUR INSTRUMENTS. YOUR CHOICE.

Reliable, easy-to-use adapters allow for seamless integration of your existing ENT instrumentation with Kolibri™. Within seconds, the Brainlab instrument calibration matrix integrates any instrument geometry—including diameter and vector.

### ACCESSORY FEATURES

- ▶ Functionality choice through Brainlab module-based software—upgrade as needed
- ▶ Quick, reliable touchless and touch-based registration with z-touch and Softouch
- ▶ Update CT data virtually with Eraser for up-to-the-minute navigation
- ▶ Seamlessly integrate ENT instruments through accurate and easy-to-use adapters

**Europe**  
+49 89 99 1568 0  
de\_sales@brainlab.com

**North America**  
+1 800 784 7700  
us\_sales@brainlab.com

**Latin America**  
+55 11 3355 3370  
br\_sales@brainlab.com

**Asia Pacific**  
+852 2417 1881  
hk\_sales@brainlab.com

**Japan**  
+81 3 3769 6900  
jp\_sales@brainlab.com

brainlab.com

