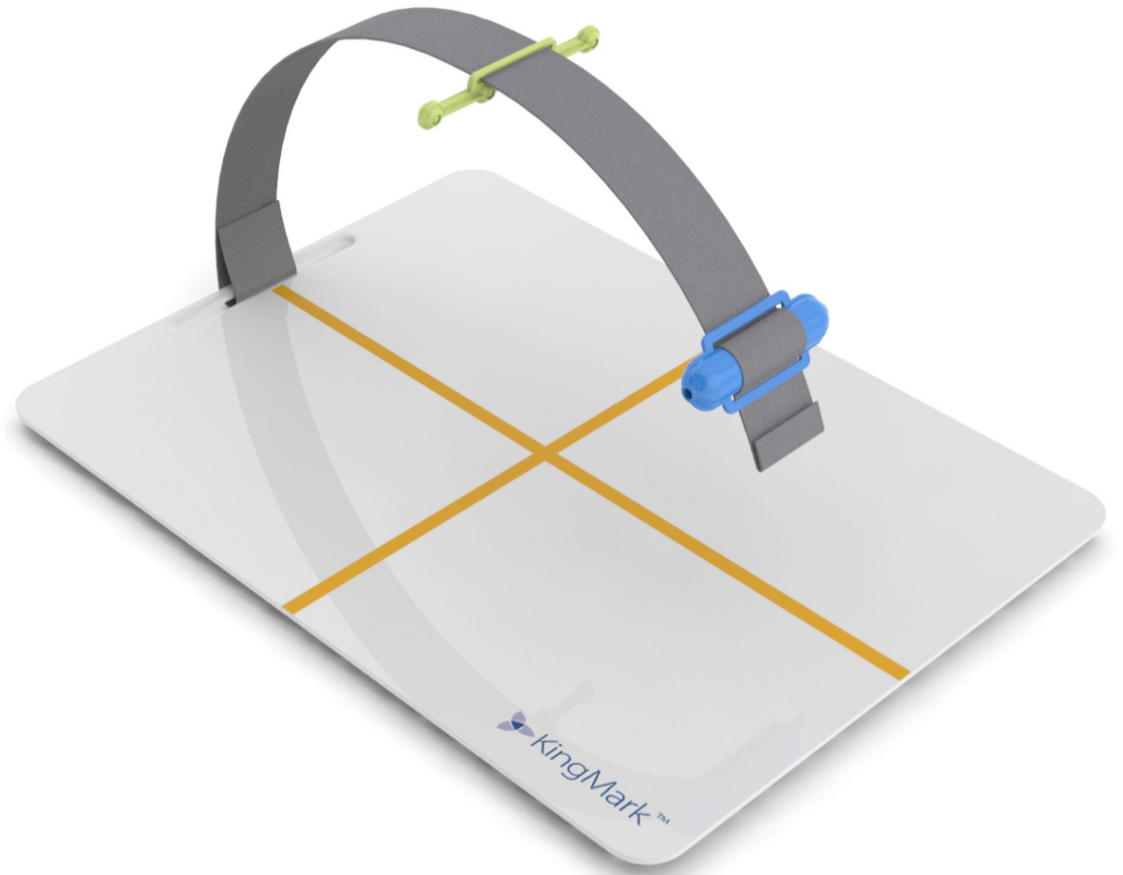
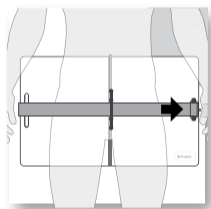


## Accurately calibrate images and measure patient anatomy

**KingMark®** is a double calibration device for AP Pelvic X-ray images. In clinical trials, KingMark performed *four times more accurately* than the conventional, single-ball marker as it's easier to position correctly and the technique is the same for all sizes of patients.

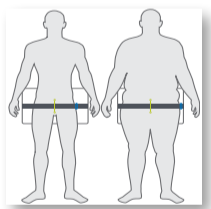


### Two is better than one



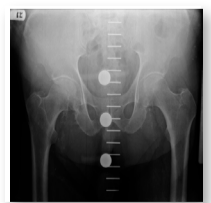
KingMark uses two separate markers- one behind the pelvis and one in front. The anterior marker is a flexible strap that secures radio-opaque balls at regular intervals. The posterior marker is a radiolucent pad with steel rods embedded in a vertical row.

### Accurate in all sizes of patients



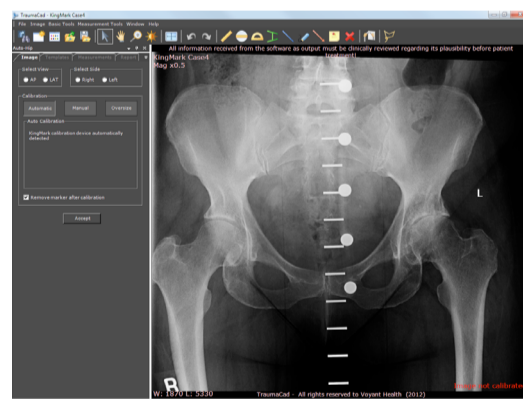
Single markers can be difficult to use in very large patients. Since KingMark is positioned midline, it always appears within the radiograph. The correct positioning technique is the same for all sizes of patients and is not awkward or invasive.

### Quick and Easy to position



KingMark is very quick and easy to position. It is visually apparent on the radiograph when markers are incorrectly positioned, thus preventing positioning mistakes.

## TraumaCad® Automatic calibration



TraumaCad automatically detects the presence of KingMark in an x-ray image, determines the magnification percentage and re-sizes it to allow accurate measurements and templates selection.